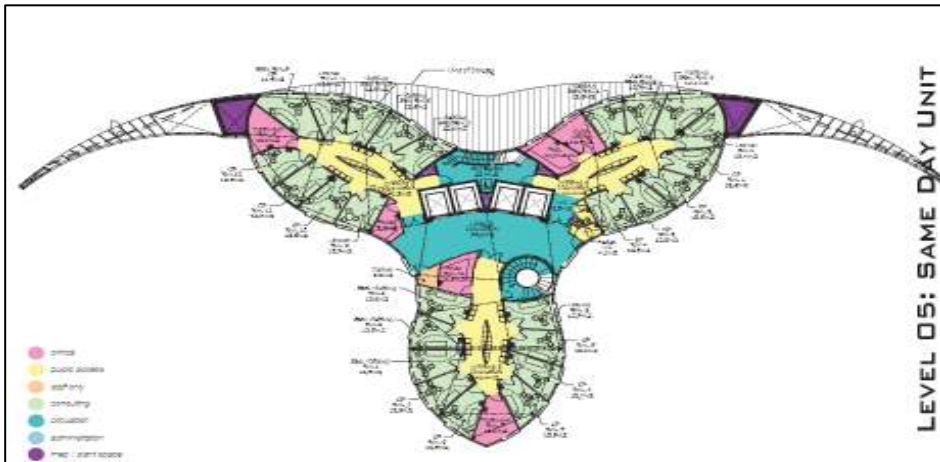
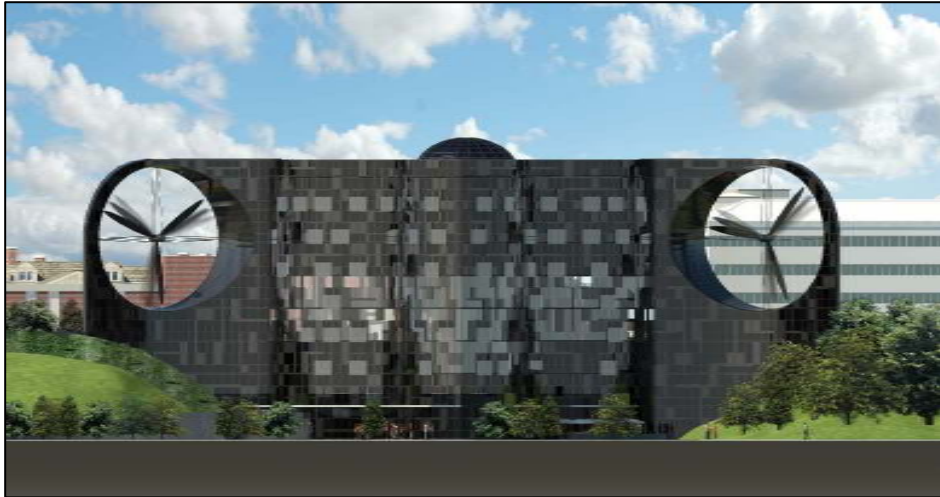


# Case Study

## Carlisle Practise Medical Centre



**Client** Carlisle Medical Group

**Value** £15,500,000

**Service** Project cost planning

Dooleys provided cost planning advice as part of the OGC framework to this unique Jonathan Bailey Architectural design. The building incorporated; a minor surgery department; office space with meeting rooms; x-ray facilities; retail area; optometrist; canteen and a gym area. The design incorporates wind turbines and is a BREEAM excellent design on a difficult sloping site.