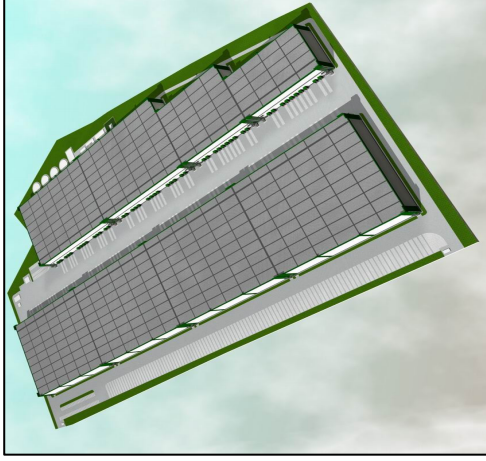


Case Study

East Point Logistics Park, Moscow



Client East Point Logistics

Value £60,000,000

Service Procurement and Project control services.

The development and leasing of a 100,000 sqft logistics centre on the outskirts of Moscow, Russia. The warehouse is being constructed under a partnership arrangement and is located on the Moscow ring road. Once constructed to meet international standards, the warehouse will be leased to major international companies.